

FOR LEASE- *MEDICAL OFFICE NEAR ST. JOHN'S HOSPITAL*

# Maplewood Professional Office Condominium Association

1560 BEAM AVENUE, MAPLEWOOD, MN 55109



## Location

Corner of Beam Avenue and Hazelwood Street, directly across from St. John's Hospital

## Year Built/ Floors

1983 / One Story Building

## Space Available

2,136 sf

## Parking

6.36 stalls per 1,000 sf including ADA stalls

## Current Configuration

Space is currently configured as a medical space and was most recently used by a geriatric practice.

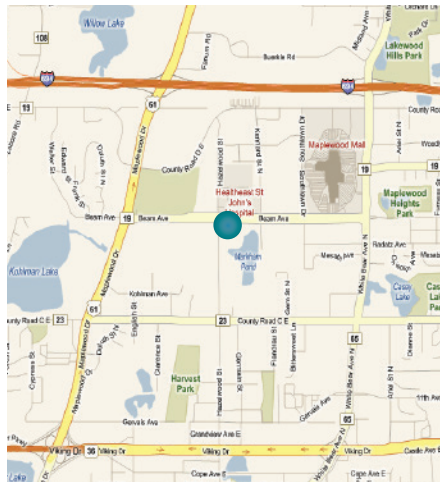
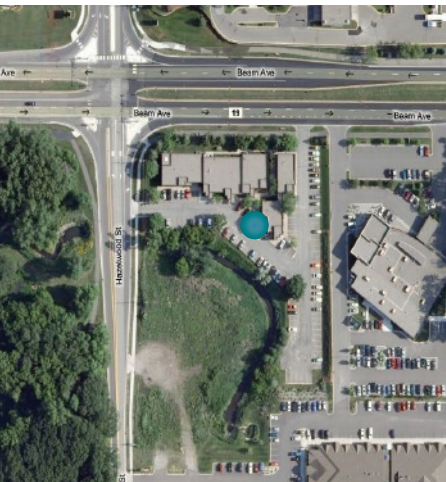
## Amenities/Features

Building consists of all medical and dental tenants.

Great visibility and accessibility to and from St. John's hospital.

Exterior building and boulevard signage.

Conveniently located near Maplewood Mall and other retail centers.



COMMERCIAL REAL ESTATE SERVICES, INC.

85 EAST SEVENTH PLACE, SUITE 200, ST. PAUL, MN 55101-2106

**Pat Wolf**

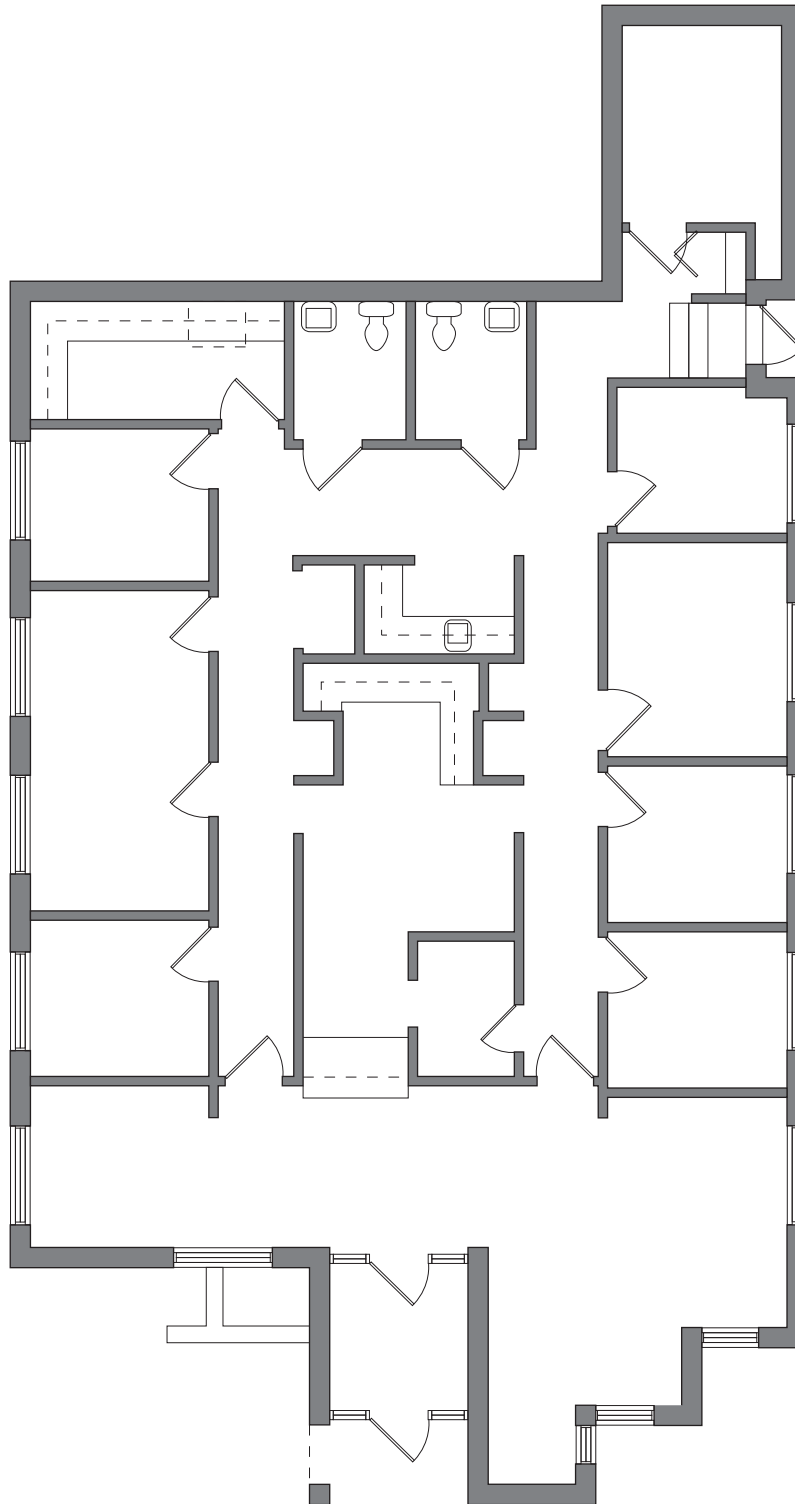
(651) 290-8892

patwolf@cres-inc.com

FOR LEASE- *MEDICAL OFFICE NEAR ST. JOHN'S HOSPITAL*

# Maplewood Professional Office Condominium Association

1560 BEAM AVENUE, MAPLEWOOD, MN 55109



COMMERCIAL REAL ESTATE SERVICES, INC.

85 EAST SEVENTH PLACE, SUITE 200, ST. PAUL, MN 55101-2106

**Pat Wolf**

(651) 290-8892

patwolf@cres-inc.com